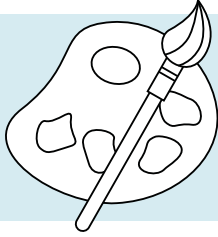


## Cognitive Disabilities



Henry taught high school math for more than forty years. For decades, Henry also painted large canvases of the local New England countryside. Upon retirement, he passionately concentrated on his hobby and became well regarded as a talented oil painter. He and Rita, his wife of fifty years, were

living their dream. Then Rita noticed a difference in Henry. He would sit staring at his easel for long periods of time without painting. He seemed forgetful. He didn't have the sharp wit that made him a favorite with students throughout his teaching career. Rita took Henry to the doctor, who performed a series of tests. The doctor told Rita and Henry that he suspected Henry had Alzheimer's.

Henry's cognitive functions declined rapidly. Rita couldn't keep up and soon became overwhelmed. She had difficulty dealing with the change in their relationship—from loving spouse to primary caregiver. She called Right at Home and was introduced to Shelly. While at Henry and Rita's house, Shelly takes over the most stressful tasks for Rita – like bathing and toilet assistance. She also vacuums, dusts and occasionally does the dishes. This gives Rita the time to get a break from her caregiving duties. She has lunch with her friends every week, goes shopping with a friend after church on Sundays and gets her hair done regularly. She also has the time and peace of mind to sit quietly with Henry, hold his hand and reminisce about their good life together.

Right at Home provides numerous special care, homemaking, and hygiene services for Henry and Rita, including:

- Light housekeeping
- Safety supervision
- Grocery shopping
- Cooking
- Bathing
- Bed baths
- Grooming
- Shaving with electric razor
- Toilet assistance and incontinence care
- Cognitive stimulation